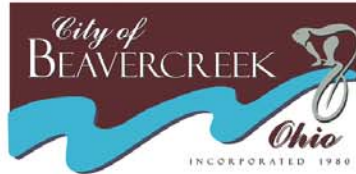
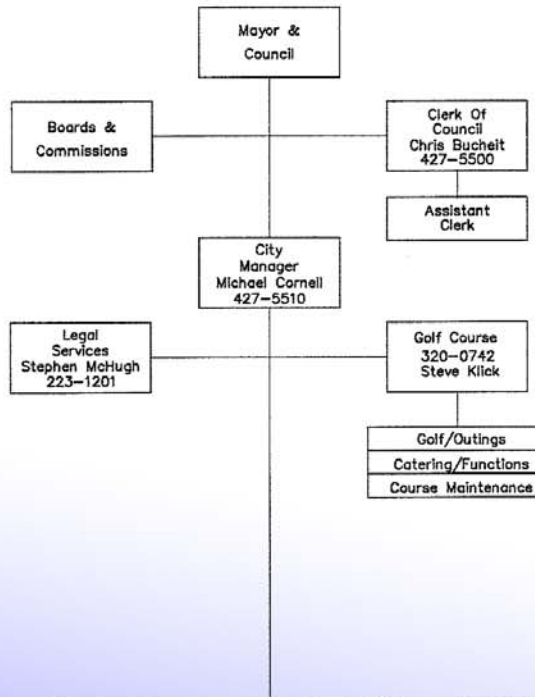


City of Beavercreek Municipal Organizational Chart

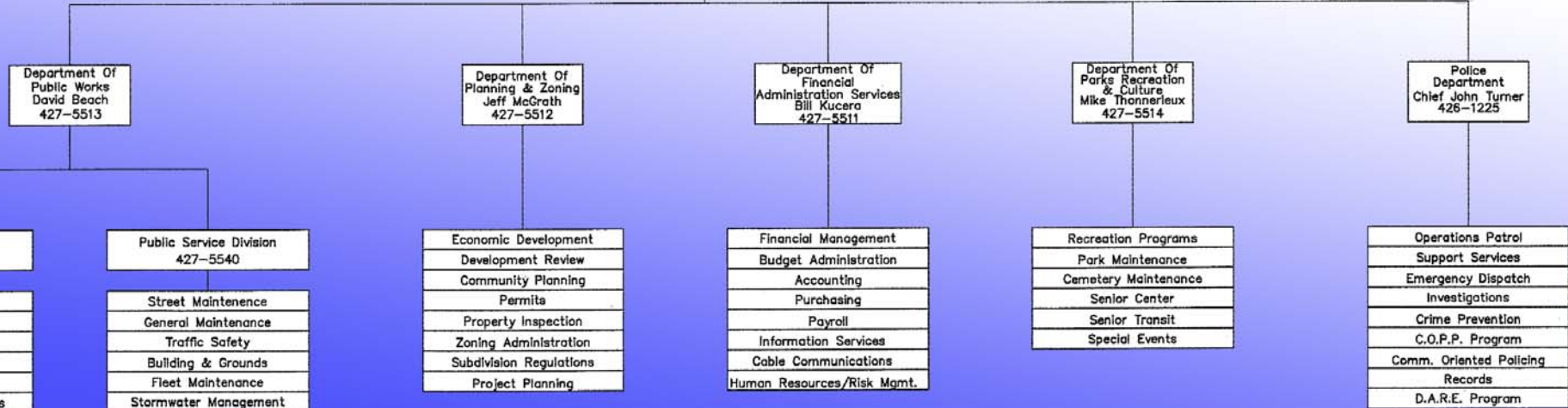


Boards and Commissions	
Planning Commission	
Parks, Recreation & Culture Board Of Zoning Appeals	
Environmental Advisory Committee	
Personnel Board	
Ad Hoc Committees	



Provided By
Beavercreek Township
Christy Ahrens Clerk 429-4472
Fire Protection
Emergency Ambulance
Mark Thomas Fire Chief
426-1213

Provided By
Greene County
Building Permits & Inspection
Water & Sanitary Sewer



Engineering Division 427-5513	
City Engineer	
Public Improvements	
Project Design	
Project Management	
Inspections	
G.I.S./Mapping Systems	

Public Service Division 427-5540	
Street Maintenance	
General Maintenance	
Traffic Safety	
Building & Grounds	
Fleet Maintenance	
Stormwater Management	

Economic Development	
Development Review	
Community Planning	
Permits	
Property Inspection	
Zoning Administration	
Subdivision Regulations	
Project Planning	

Financial Management	
Budget Administration	
Accounting	
Purchasing	
Payroll	
Information Services	
Cable Communications	
Human Resources/Risk Mgmt.	

Recreation Programs	
Park Maintenance	
Cemetery Maintenance	
Senior Center	
Senior Transit	
Special Events	

Operations Patrol	
Support Services	
Emergency Dispatch	
Investigations	
Crime Prevention	
C.O.P.P. Program	
Comm. Oriented Policing	
Records	
D.A.R.E. Program	